

# FastStart® HVPC

High-Volt Pulsed Current Stimulation

## High-Volt Universal Patient Protocol

### Control Instructions

Press **ON/OFF** to turn on the FastStart HVPC.

#### To select preset:

- Press **TAB/FIELD** until *Preset #* flashes in upper left corner of screen.
- Use **INCREASE** and **DECREASE** to select your preset.
- Press **TAB/FIELD** to return to the treatment screen.

#### To adjust treatment intensity:

- Press **INCREASE** to raise level of stimulation.
- To reduce amplitude, press **DECREASE**.

#### To pause treatment:

- Press **PAUSE** to temporarily put treatment on hold.
- Press **PAUSE** again to resume treatment.

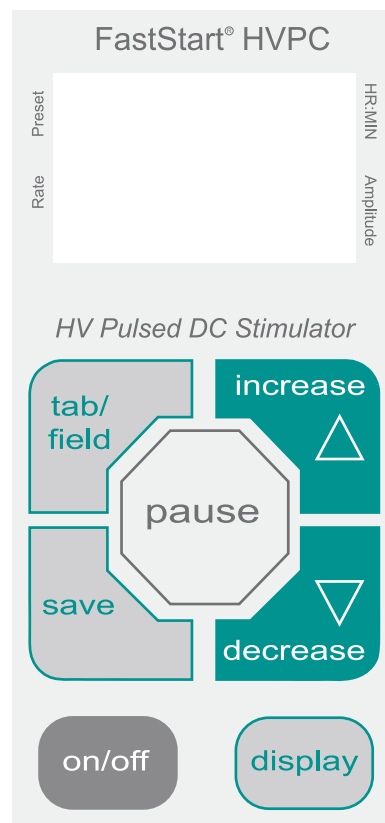
Press **ON/OFF** to turn off the device at any time.

### Standard Protocol Setting

#### Preset #1 - INCREASE CIRCULATION RELAX MUSCLE SPASMS

- Provides a 30-MINUTE PERIOD OF TREATMENT

If you experience muscle spasms or intolerance to the stimulation, please contact VQ OrthoCare's Patient Care department at **800.452.7993**.



# FastStart® HVPC

High-Volt Pulsed Current Stimulation

## Component Use and Care

### Electrodes

**IMPORTANT:** Read the instructions for the application and use of electrodes found on the electrode package and in the patient operating manual.

- Reusable, self-adhering electrodes are included in your kit.
- **Do not** use alcohol to clean skin surface.
- Apply electrodes to dry, clean, unbroken skin surfaces only, checking all edges for proper adhesion.
- **Do not** apply skin lotion prior to application of electrodes.
- Electrodes should always be placed at least **one inch apart**.
- Remove electrodes before showering.
- Once electrodes are removed from skin, adhesive-remover towelettes can be used to clean off any adhesive residue.
- If you experience symptoms of skin irritation while using the FastStart HVPC, discontinue use immediately and contact VQ OrthoCare's Patient Care department at **800.452.7993**, or consult your physician.

### Caution

Electrodes should be discarded and replaced if damaged or when proper adhesive tack can no longer be obtained, the gel has separated, or a change in stimulation intensity is perceived. If in doubt about the integrity or proper function of any electrode, replace it before proceeding with treatment. **IF USING PAIN MEDICATION AND/OR PAIN MANAGEMENT DEVICES, EXERCISE CAUTION WHEN INCREASING AMPLITUDE ON THE FASTSTART HVPC.**

### Warning

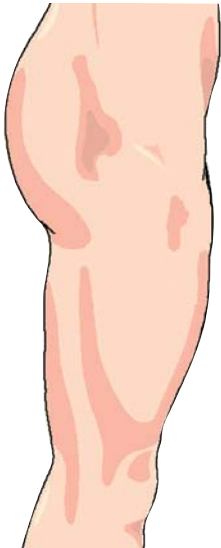
This device is designed for use only with electrodes approved for medical electrical stimulation.

### Batteries and AC adapters

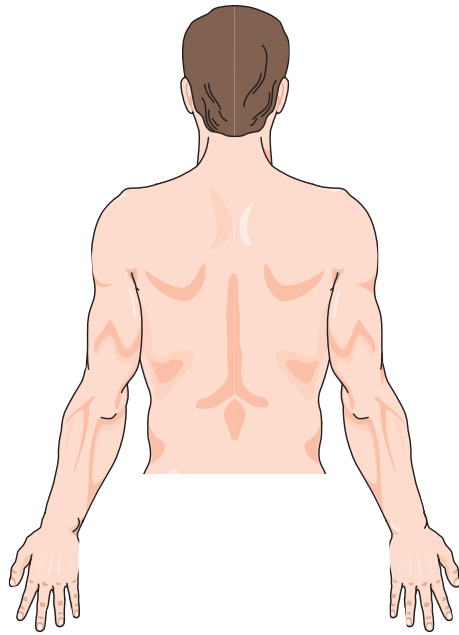
- Low-battery indicator will flash when battery power pack needs to be replaced. Remove used power pack and replace with new unit.
- Power packs are not rechargeable. **THE AC ADAPTER DOES NOT CHARGE THE BATTERIES.**
- Replacement power packs can be ordered from VQ OrthoCare's Patient Care department at 800.452.7993.

VQ OrthoCare does not assume liability for the improper use of this equipment.

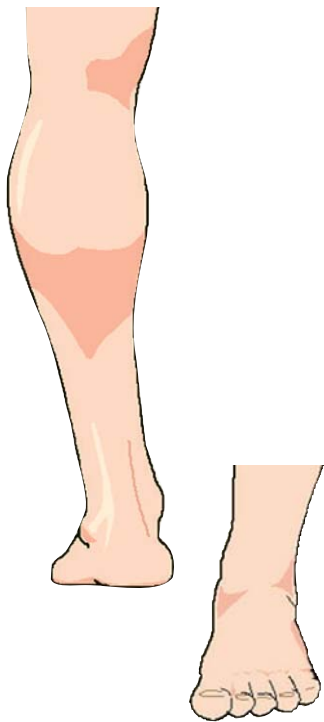
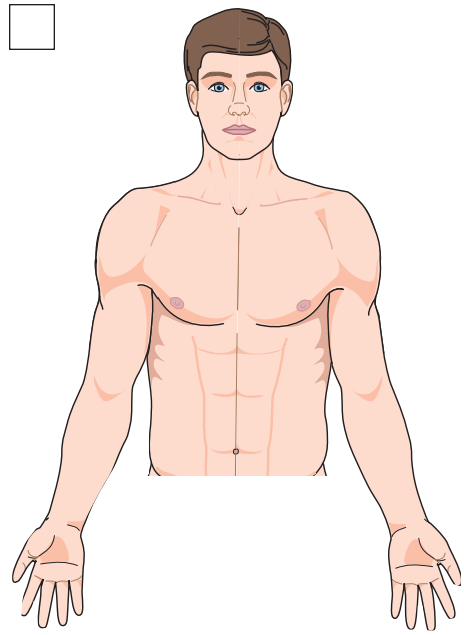
# Electrode Placement



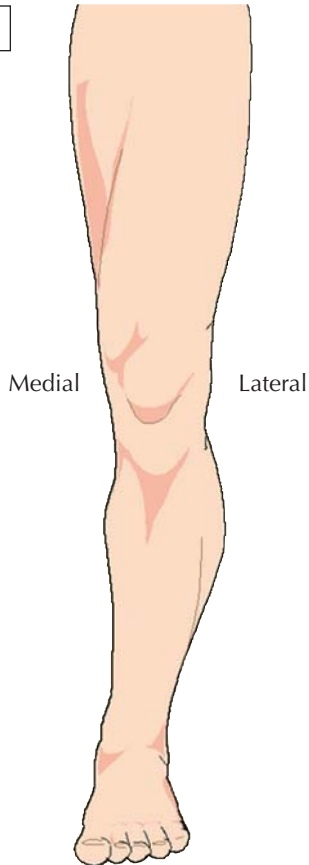
Hip



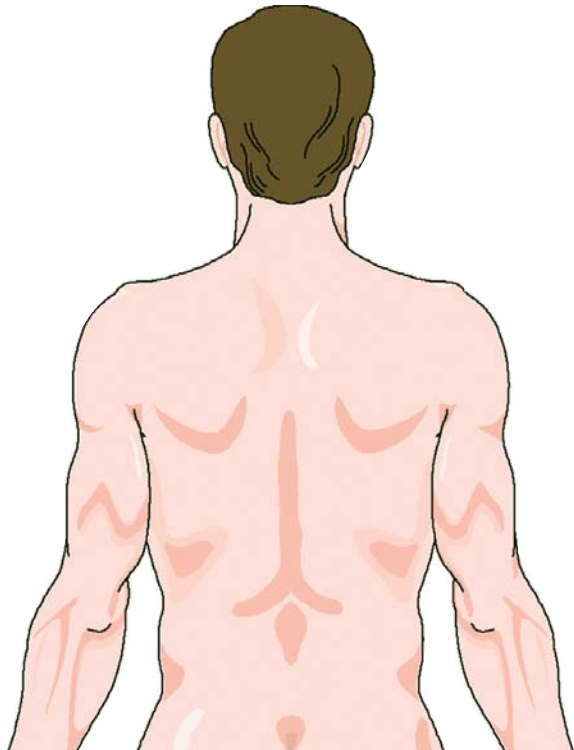
Upper Extremity



Ankle



Knee



Back

## Indications

- Symptomatic relief of chronic intractable pain and as an adjunctive treatment in the management of post-traumatic and postsurgical pain relief
- Relaxation of muscle spasms
- Prevention or retardation of disuse atrophy
- Increasing local blood circulation
- Muscle re-education
- Immediate postsurgical stimulation of calf muscles to prevent venous thrombosis
- Maintaining or increasing range of motion

Stimulators should only be used under medical supervision as adjunctive therapy for the treatment of medical diseases and conditions.

## Contraindication

Stimulators should not be used on patients with cardiac demand pacemakers

## Warnings

- The longterm effects of chronic electrical stimulation are unknown
- Stimulation should not be applied over the carotid sinus nerves, particularly in patients with a known sensitivity to the carotid sinus reflex
- Stimulation should not be applied over the neck or mouth. Severe spasm of the laryngeal and pharyngeal muscles may occur and the contractions may be strong enough to close the airway or cause difficulty in breathing
- Stimulation should not be applied transthoracically in that the introduction of electrical current into the heart may cause cardiac arrhythmias
- Stimulation should not be applied transcerebrally
- Stimulation should not be applied over swollen, infected, or inflamed areas or skin eruptions (e.g. phlebitis, thrombophlebitis, varicose veins, etc.)
- Stimulation should not be applied over, or in proximity to, cancerous lesions

## Precautions

- Safety of stimulators for use during pregnancy has not been established
- Caution should be used for patients with suspected or diagnosed heart problems
- Caution should be used for patients with suspected or diagnosed epilepsy
- Caution should be used in the presence of the following:
  - When there is a tendency to hemorrhage following acute trauma or fracture;
  - Following recent surgical procedures when muscle contraction may disrupt the healing process;
  - Over the menstruating or pregnant uterus; and
  - Over areas of the skin which lack normal sensation
- Some patients may experience skin irritation or hypersensitivity due to the electrical stimulation or electrical conductive medium. The irritation can usually be reduced by using an alternative conductive medium or alternate electrode placement
- Electrode placement and stimulation settings should be based on the guidance of the prescribing practitioner
- Keep out of reach of children
- Use only with the leads and electrodes recommended for use by the manufacturer
- Portable stimulators should not be used while driving, operating machinery, or during any activity in which involuntary muscle contractions may put the user at undue risk of injury

## Adverse Reactions

Skin irritation and burns beneath the electrodes have occasionally been reported with the use of stimulators

## CAUTION

Federal law restricts this device to sale by, or on the order of, a practitioner licensed by the law of the State in which he/she practices to use or order the use of the device.



Patient-Centered Solutions

18011 Mitchell South, Irvine, CA 92614

800.266.6969 Fax 800.821.8012

www.vqorthocare.com

customerservice@vqorthocare.com