

ECAST™ CAMERA SET UP INSTRUCTIONS

FOR THE OLYMPUS VG-160

GETTING STARTED

Your camera has a rechargeable battery that must be charged before use. Please charge your camera and setup your picture resolution **BEFORE** the first patient appointment to avoid rejection of your order.

(See back of this page for instructions to charge)

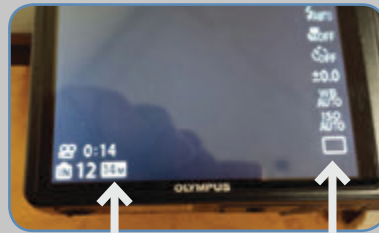
- 1 After removing the camera, turn the camera on by pressing the **ON/OFF** button located on top of the camera.



ON/OFF Button

If this is the first time you have turned on your camera then you will also need to enter the date, time, and time zone information

- 2 When you first turn on the camera you will see the standard settings along the right side of the display. Down in the lower left corner it will indicate the picture resolution. Press the **MENU** button to access the picture resolution menu.

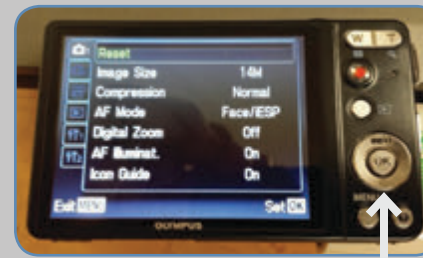


Picture Resolution

Settings

NOTE: If the picture resolution is not "VGA" then you will need to set the picture resolution of your camera **BEFORE** you take any photo's to submit.

- 3 Now press the bottom of the ring that surrounds the **OK** button and highlight the image size.



Ring Down Arrow



Image Size Setting

- 4 Press either the **OK** button or the right side of the ring to bring up the image size selection screen and then use the bottom of the ring to scroll down to the selection for **VGA**.



- 5 Press **OK** to accept the **VGA** setting and you will get a screen that looks like this. Press the **MENU** button again to start taking photos.



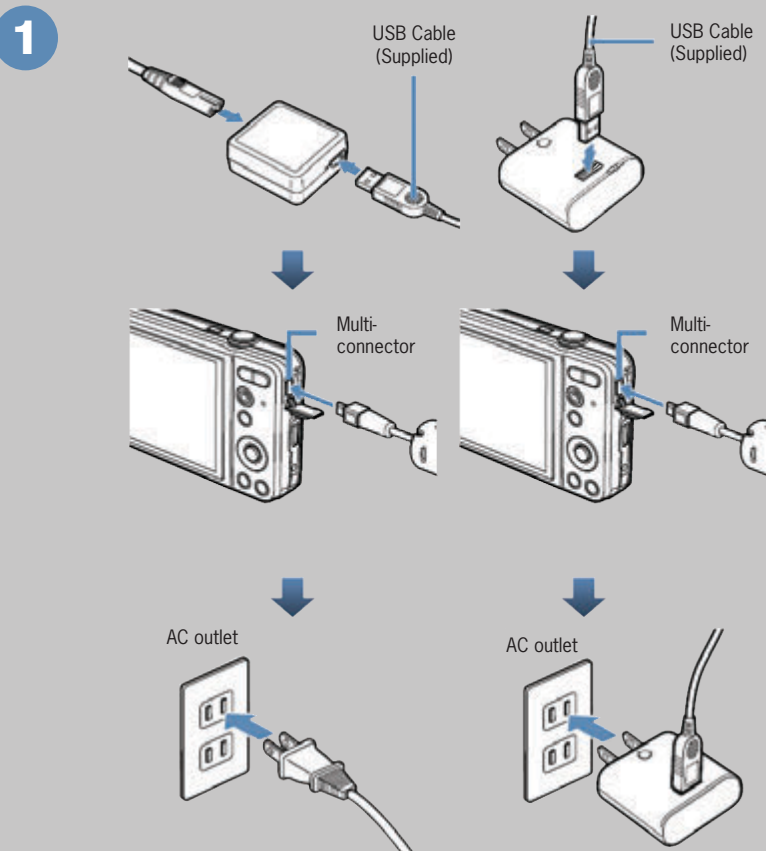
18011 Mitchell South • Irvine, CA • 92614
www.vqorthocare.com • 800.266.6969



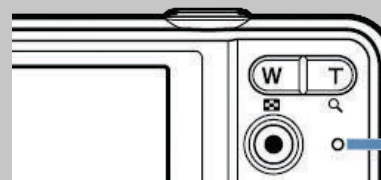
© 2013 VisionQuest Industries, Inc.
VQ0151700REVA

CHARGING THE BATTERY

- ! The included F-2AC USB-AC adapter (hereafter referred to as USB-AC adapter) differs depending on the region where you purchased the camera.
- ! The supplied USB-AC adapter is for charging and playback only. Do not take pictures while the USB-AC adapter is connected to the camera. The camera cannot playback with out the battery even when connected to the USB-AC adapter.



2



Indicator lamp
ON: Charging
OFF: Charged

- ! The battery is not fully charged at time of purchase. Before use, be sure to charge the battery until the indicator lamp turns off (up to 3 hours).
- ! If the indicator lamp does not light the camera, or USB-AC adapter may not be functioning as expected.
- ! For details of the battery and the USB-AC adapter, see "The battery and USB-AC adapter" (pg. 59 in the cameras manual)
- ! The battery can be charged while the camera is connected to the computer. Charging time varies depending on the performance of a computer. (There may be cases in which it takes approx. 10 hours)

WHEN TO CHARGE THE BATTERIES

Charge the battery when the error message shown below appears.

Flashes in red



Monitor top left



Error message

Information about how to change other settings on the camera or how to load an SD card can be found in the camera's manual. You can access the manual at:

http://www.olympusamerica.com/files/oima_cckb/VG-160_Instruction_Manual_EN.pdf