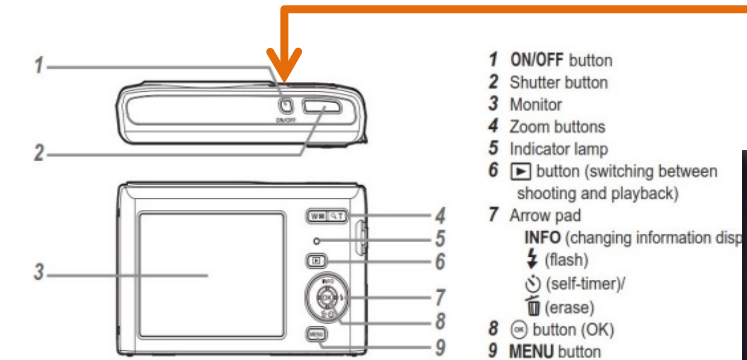


Your camera has a rechargeable battery that may need to be charged before you eCast your first patient. Please charge your camera and do the following procedure to setup your camera BEFORE the first patient arrives!!! (see back of this page for instructions to charge)

How to set-up the Olympus VG-180 camera for doing eCasting.



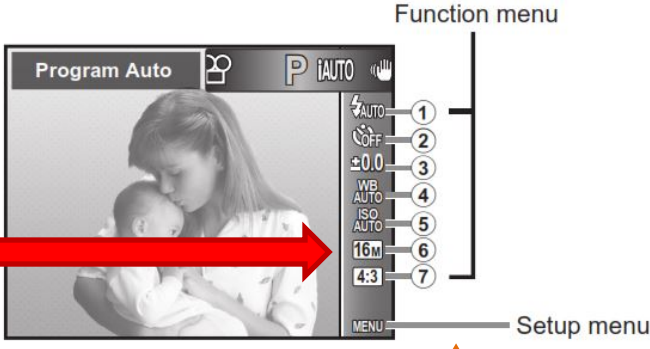
After removing the camera turn the camera on by pressing the ON/OFF button located on top of the camera.



If this is the first time you have turned on your camera then you will also need to enter the language, date, time and time

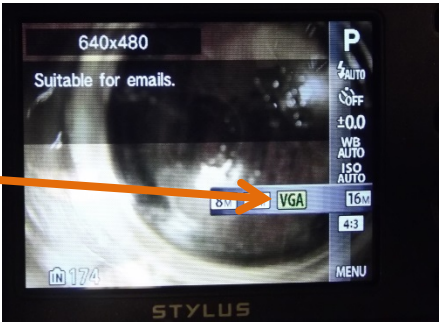
zone information.

Looking down the right side of the screen will indicate the picture resolution. If this is not "VGA" then you will need to set the picture resolution of your camera BEFORE you take any photo's to submit.



When you first turn on the camera you will see the standard settings along the right side of the display. Press the left button to access the function menu shown above. Press the down button 6 times to get to the resolution setting.

Now press the left button of the ring that surrounds the OK button until VGA is highlighted.



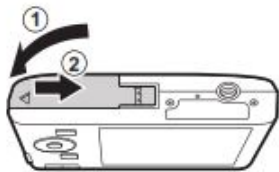


Press the OK button when you are done and that will set the resolution and your screen should look like this screen. You are ready to take your pictures.

Information about how to make other settings on the camera or how to load an SD card can be found in the camera's manual. You can access the manual by going to:

http://www.olympus.co.uk/site/rmt/media/consumer/pim/_manuals_ss2013/_VG-165_180_MANUAL_EN.pdf

4 Follow Steps ① and ② to close the battery/card cover.



! When using the camera, be sure to close the battery/card cover.

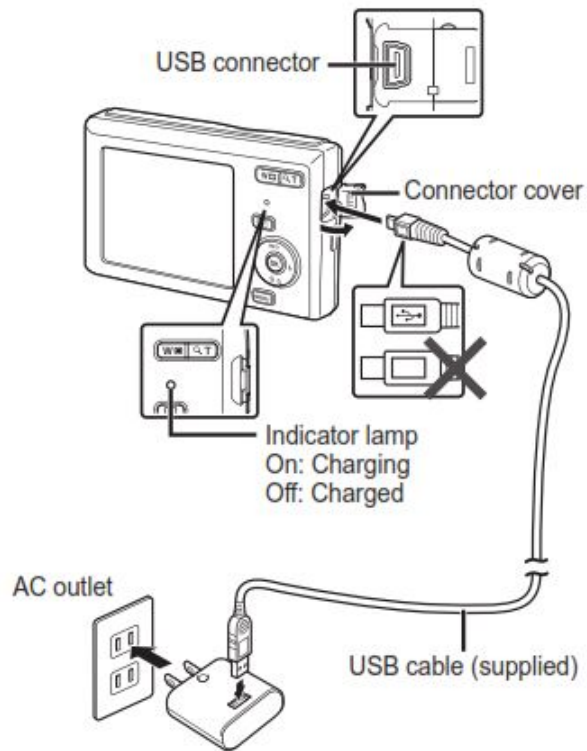
Charging the battery

Connect the USB cable and USB-AC adapter to the camera and charge the battery.

For charging the battery abroad, see "Using your charger and USB-AC adapter abroad" (p. 48).

- The battery is not fully charged at shipment. Before use, be sure to charge the battery until the indicator lamp turns off (up to 3 hours).

Connecting the camera



When to charge the batteries

Charge the battery when the error message shown below appears.



Flashes in red

