

# Conductive Garment Electrodes



The Conductive Garment Electrodes are woven with a silver thread for even current distribution and maximum comfort and efficiency. They are excellent for patients who are prone to skin irritations caused by traditional electrodes or when adhesive electrodes are detrimental to the patient's condition. These garments can be used with interferential and HVPC stimulation systems.

## Measurements

	Sock sizes fit shoe size		Glove sizes fit	Sleeve sizes
	Men's	Women's	(measure around palm)	fits max circumference (stretched)
Small	≤7.5	≤6.5	6-6.5"	15"
Medium	8-9	7-9.5	7"	18"
Large	9.5-10	10-12	8"	20"
X-Large	11-12	≥13	9"	24"
XXL	≥13			>24"

**WARNING:** This product should be used only under the direct supervision of a registered Healthcare Practitioner. Product use should be in accordance with the directions and specification of the neuromuscular or interferential simulation device. Improper use of this or any neuromuscular electrode may result in a patient burn. In the event of skin irritation, discontinue use and contact Patient Care at VQ OrthoCare<sup>SM</sup>, 1-800-452-7993 or consult a physician. Extreme care should be taken when using any electrode over the thoracic area. Due to the potential for causing cardiac arrhythmia, interferential devices must limited to 1 mA per ms<sup>2</sup> of electrode surface area when used in this manner.

**STORAGE:** Disconnect the cabling and store garment in sealed plastic bag.

**CAUTION:** In multiple, consecutive treatments of a patient, the electrodes should be discarded and replaced if damaged or when comfort can no longer be obtained. If in doubt about the integrity for proper function of any neuromuscular electrode, replace before proceeding.

### CAUTION

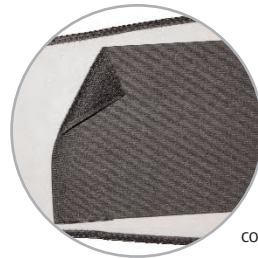
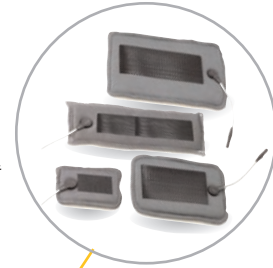
Federal law restricts this device to sale by or on the order of a practitioner licensed by the law of the State in which he/she practices to use or order the use of the device.

# Conductive Back Support Kits

The Conductive Back Support Kit consists of a lightweight back support, which accommodates a variety of sizes and configurations of hook and loop backed electrode pads. The back support is made from a very comfortable, breathable fabric that easily contours to fit the patient. The support has posterior lateral stays to reduce rollover and a double elastic pull to ensure consistent contact with the patient's skin. The pads are woven with a silver thread for even current distribution, providing maximum comfort and efficiency.

The kit is extremely effective for patients who have difficulty applying traditional electrodes to the lower back, develop skin irritations with adhesive electrodes or for users who have difficulty with electrode adherence due to excessive perspiration. For use with interferential and HVPC stimulation systems.

Several electrode panel configurations are available to accommodate various stimulation types.\*



Double elastic pull for greater compression and more comfortable stimulation

## Measurements

Brace and electrode sets	Electrodes only
Brace with 4 sm (2" x 3") pads	(2) 2" x 3" pads
Brace with 2 sm and dispersive pad	(1) 3" x 5" pad

\*Conductive pads and back braces will be sold as a set or electrodes may be purchased separately.

**WARNING:** This product should be used only under the direct supervision of a registered Healthcare Practitioner. Product use should be in accordance with the directions and specification of the neuromuscular or interferential simulation device. Improper use of this or any neuromuscular electrode may result in a patient burn. In the event of skin irritation, discontinue use and contact Patient Care at VQ OrthoCare<sup>SM</sup>, 1-800-452-7993 or consult a physician. Extreme care should be taken when using any electrode over the thoracic area. Due to the potential for causing cardiac arrhythmia, interferential devices must limited to 1 mA per ms<sup>2</sup> of electrode surface area when used in this manner.

**STORAGE:** Disconnect the cabling and store garment in sealed plastic bag.

**CAUTION:** In multiple, consecutive treatments of a patient, the electrodes should be discarded and replaced if damaged or when comfort can no longer be obtained. If in doubt about the integrity for proper function of any neuromuscular electrode, replace before proceeding.

### CAUTION

Federal law restricts this device to sale by or on the order of a practitioner licensed by the law of the State in which he/she practices to use or order the use of the device.



18011 Mitchell South, Irvine, CA 92614  
Call 800.266.6969 Fax 800.821.8012  
www.vqorthocare.com  
customerservice@vqorthocare.com